

# Backwards Singing Worksheet!

## 1. Upside-down

- Separate the phonemes:

1 p s a i d æ u n

- reverse them

n u æ d i a s p a

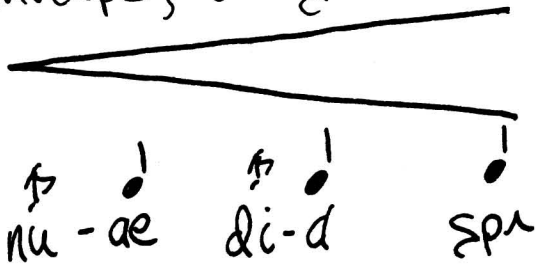
- some of these can be grouped

nu - æ di - a spa

- some of these groupings act as grace notes in the forward version.

↗     |     ↗     |     ↗     |  
 nu - æ    di - a    spa

- sounds in reverse have a special envelope, usually:



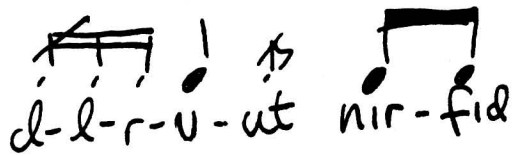
## 2. Different World

whispered:

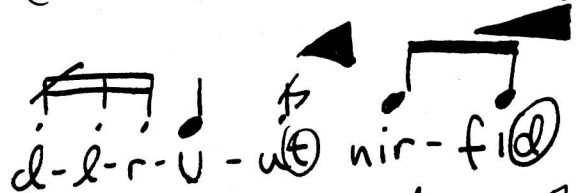
d i f r i n t u w o r l d

d l r u t n i r f i d

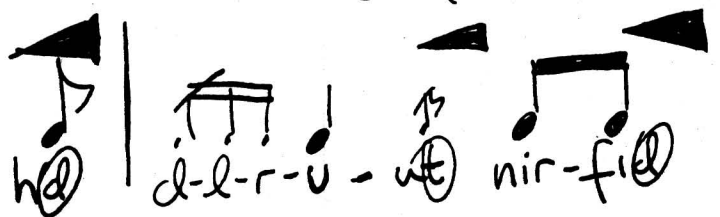
d-l-r-u - ut nir - fid



- "Different" begins with a plosive "d". To approximate this backwards, crescendo on the "i" of "fid" and finally stop the sounding by making the shape for "d".



- To approximate the decay that would normally follow this line (when performed in a concert hall), I added an aspirated "h" to the beginning



Voilà!